

# Satelco VoiceBlue Lite Quick Setup Guide



## Attention

Before installation of VoiceBlue Lite please upload newest Firmware. The actual firmware and software you will find on the CD-Rom or on our website [www.satelco.ch/download.htm](http://www.satelco.ch/download.htm).

## Upload-Procedure:

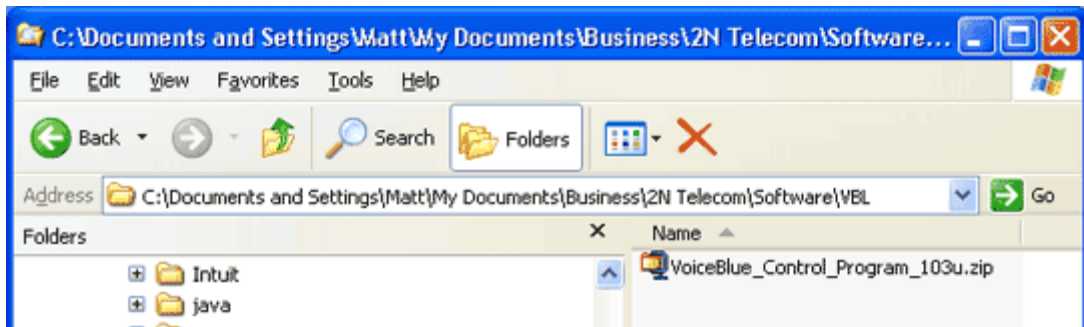
- Connect your PC to VoiceBlue via RS232
- Prepare the firmware-containing file into a folder selected by you
- Run VoiceBlu program
- In the menu "Gateway control" choose item "Upload firmware"
- Choose file containing new firmware
- The program now automatically uploads your new firmware - the gateway is reset during this procedure. Do not interrupt the program during this procedure to avoid errors in firmware uploading - otherwise the gateway might stop working!

If procedure of uploading firmware was terminated, please reset gateway and re-load VoiceBlue program and try to upload firmware again.

**!!!The gateway is locked for 850 hours (ca. 35 days). After this time the gateway will block the VoIP-SIP interface. For unlock code you have to ask Satelco sales to send you an unlock key (please send us an e-mail to [Satelco@satelco.ch](mailto:Satelco@satelco.ch) with serial-number of VoiceBlue)!!!**

**This guide will show you how to quickly setup the Satelco VoiceBlue Lite GSM VoIP Gateway with a basic configuration that will suffice for most installations. It will not show you how to setup your particular SIP proxy/IP PBX. Please consult your SIP proxy manual for details of configuring a SIP trunk on your product.**

Firstly, make sure you have the latest VoiceBlue Control Program by downloading it from: [www.satelco.ch/download.htm](http://www.satelco.ch/download.htm)

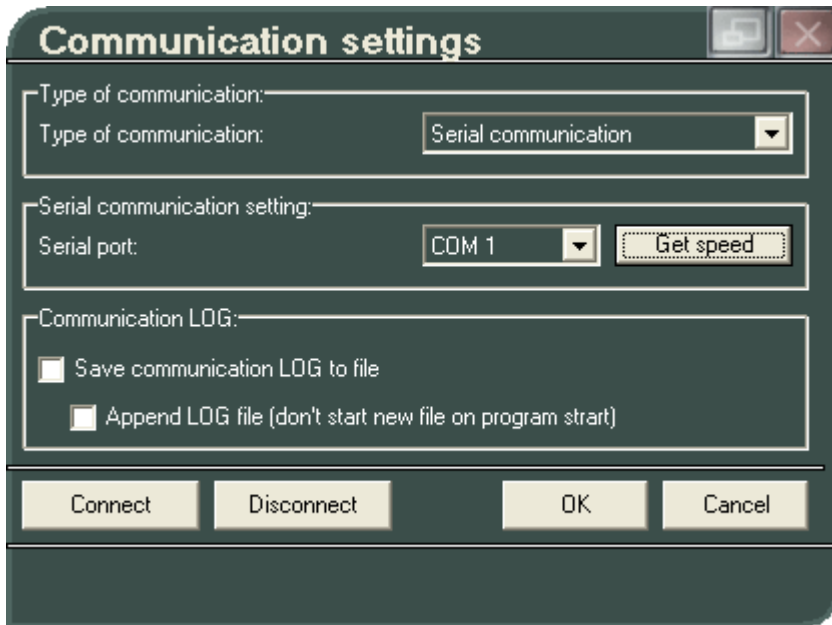


Double click on the downloaded zip file and extract to a folder on your PC's disc drive.

Now double-click on the extracted setup.exe to install the program. Follow the installation wizard, selecting the default entries to install the Control Program. Once installed the Control Program window will appear.



**Connect the supplied serial cable connected between your gateway and your PC COM1 port and click the COMM button.** Make sure you have at least one SIM card with some credit on it in one of the SIM drawers. When the SIM is inserted correctly and registered to its network the LED corresponding to the installed SIM will be off. SIM's can be inserted with the gateway powered on but you may need to power reset the gateway for it to read the SIM correctly. Be sure to insert the SIM holder into the drawer the correct way up. You should not have to force it.



When the **Communication settings window** appears, click the Get speed button. The gateway will then read the speed of your com port in order for it to make a connection. Then click Connect and OK.

You should now have the following window and can see from the status display that you are connected to the gateway.

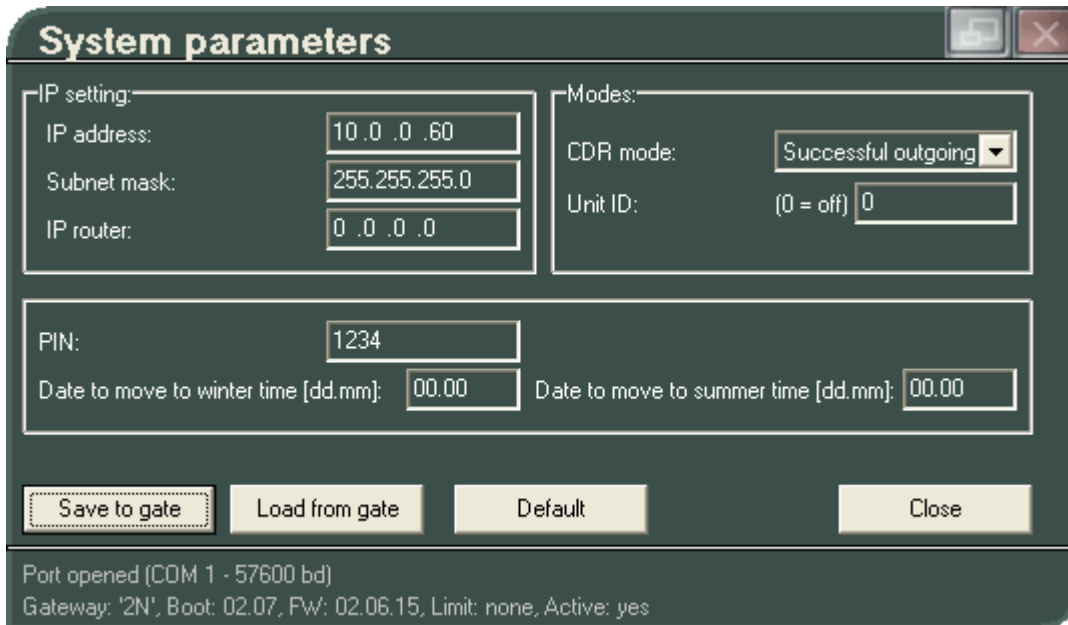


Click on PROG and then double-click on the System Parameters option.



**On the following window enter the IP details for this gateway, including the router IP if this gateway and its SIP proxy are on different networks.** The IP address you configure here will be the address that your SIP proxy is configured to use when setting up the SIP trunk to the gateway. Finish by clicking on Save to gate. When asked Would you like to save set parameters to disc, select yes if you want your settings saved to your parameters file. This is good practise if you want to store your gateways settings offline for recovery, or you are managing multiple gateways through the Control Program, etc.

**Note:** Whenever you make any configuration changes on the gateway always save them to the gate and optionally save them to disc when asked if you would like to keep configuration information stored off line.



Next we will setup SIP information and other **VoIP parameters** such as required CODEC's, etc.



Double click the Ethernet parameters option.

**Ethernet**

Mode/protocol: SIP  
 Day of deleting statistics: (0=off) 1

Voice parameters:  
 First RTP port: 8000  
 Last RTP port: 8998  
 (RTP ports must be even, greater than 1024 and 2nd port must be greater or equal by 10 than 1st port)

SIP registration:  
 Registration expires: 0 [s]  
 Reattempt registration: 0 [s]  
 Register domain:  
 Username:  
 Password:

Codecs priority:  
 Select supported codec: G729 G723  
 Priority 1: 18 - G729  
 Priority 2: 8 - G711u  
 Priority 3: 0 - G711a

Codecs settings:  
 Number of blocks: VAD  
 G711: 4  
 G723: 1  
 G729: 2  
 G723 bit rate: 6.3 kbps

SIP protocol settings:  
 Send 180 Ringing instead of 183 Session progress  
 Send 200 OK instead of 180/183  
 Send 486 when refused from GSM

IP addresses:  
 SIP proxy (GSM->IP): 10.0.0.2 Use default port: 5060  
 SIP proxy (IP->GSM): 10.0.0.2 Use default port: 5060  
 SIP registrar: 0.0.0.0 Use default port: 5060  
 NAT firewall: 0.0.0.0

Save to gate Load from gate Default Close

Disconnected  
 Gateway: '2N'

**In the IP address section enter the IP address of your SIP proxy server.** This will usually be the same address in GSM>IP and IP>GSM fields. If you are using non-standard ports for SIP operation uncheck the Use default port and enter your required port number. Remember to click on Save to gate to load your settings to the gateway and then click Close. Save your settings to disc if required. SIP registration username and password are not required unless you specifically need extra security on this trunk.



